

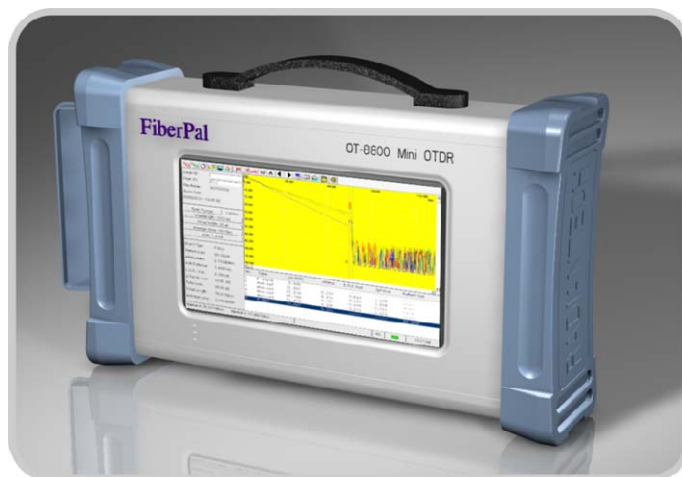
Mini OTDR—OT-8800

Optical Time Domain Reflectometer

OT-8800 series instruments are compact, cost-effective, portable Optical Time-Domain Reflectometer (OTDR). By providing all the measurement functions and performance required for optical fiber construction and maintenance, it is designed for full-range fiber fault detection to solve FTTx, CATV and optical LANs problems.

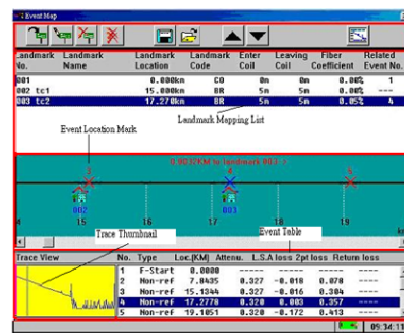
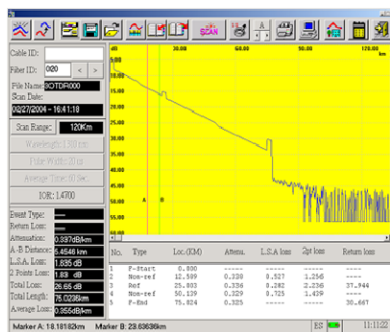
Main Features

- Fault event analysis
- Real-Time Display
- Touch Screen
- High resolution and dynamic range
- Mapping function with actual position display
- Rugged, Sealed design for most challenging environments
- Portable, and User friendly interface
- LAN and USB 1.1 ports
- Powered by rechargeable Li-ion battery
- Visual Fault Locator (option)



Applications

- Splicing loss detection
- Fiber attenuation measurement
- Fiber acceptance test
- Fiber break point locating
- Fiber length measurement
- On-Line monitoring
- Fiber identification



Frederick Engineering, Inc.
832 Oregon Avenue, Suite M
Linthicum, MD 21090



Phone: 410-789-7890
Fax: 410-789-7670
e-Mail: fe@fetest.com

www.fetest.com

Specifications

Model		8810	8820
Wavelength		1310/1550±20 nm	1550/1625±20 nm
Fiber		9/125 µm single mode fiber	
Optical Connector		FC/PC or SC/PC	
Pulse Width		10, 30, 100, 300, 1000, 3000, 10000, 20000 ns, Auto	
Dynamic Range (dB)	Effective	35/33	33/31
	SNR=1	38/36	36/34
Event Dead Zone		3 m	
Attenuation Dead Zone		10 m	
Sampling Resolution		0.25, 0.5, 1, 2 m	
Max. Sampling Points		128 k	
Distance Accuracy		$\pm 2 \text{ m} + 3 \cdot 10^{-5} \cdot \text{distance} + \text{marker resolution}$ (Fiber index error not included)	
Loss Accuracy		±0.05 dB/dB, or 0.1 dB (whichever greater)	
Return Loss Accuracy		±4 dB	
Max. Display Range		240 km (150 mile)	

Specifications

Dimensions	220 (L) x 170 (W) x 80(H) mm
Weight	2.5kg
Temperature	Operating: 0 to +50°C Storage: -10 to +60°C
Humidity	0 to 85 % (non-condensing)
Ordering Information	
Wavelength	Dynamic Range
1 = 1310 / 1550nm 2 = 1350 / 1625nm 3 = 1310nm 4 = 1495nm 5 = 1550nm 6 = 1625nm 7 = 1310 / 1490 / 1550nm 8 = 1310 / 1550 / 1625nm	0 = 35dB 1 = 40dB 2 = 25dB
e.g. : OT-8810 = OT-88 series product with dual bands of wavelength of 1310 and 1550nm and dynamic range 35dB (The number of blue color could be modified basing on customer need and then filled in the parameters provided in the Ordering Information.)	

Frederick Engineering, Inc.
 832 Oregon Avenue, Suite M
 Linthicum, MD 21090



Phone: 410-789-7890
 Fax: 410-789-7670
 e-Mail: fe@fetest.com

www.fetest.com