

PCD 126

Coupling Network for Asymmetrical Data and Control Lines

■ The **PCD 126** is used for surge coupling of 1,2/50us - 8/20us combination wave impulses and ring wave impulses 100kHz up to 6.6kV peak onto unshielded asymmetrical data and signal lines according IEC/EN standards. Up to 4 wires can be tested simultaneously.

To obtain maximum flexibility only coupling elements are included in the PCD 126. Decoupling circuits, which depends on the EUT to be tested, can be placed separately in the test setup.

Manual coupling path switching for common mode (longitudinal, line to earth) and differential mode (transversal, line to line) testing.

Default coupling elements are capacitors and breakdown avalanche diodes. The coupling elements can be selected easily. The direct coupling output allows the customer to use his own coupling elements.

The PCD 126 can be used together with the impulse modules PIM 100 and PIM 110 from the Surge Platform and the PSURGE 4010. These provide all the programming functions required to perform IEC, ANSI and EN testing also without the need of a control computer.

With a 100 year history of innovation, service centers on three continents and a full staff development and support engineers, Haefely is the clear choice for all your transient immunity test needs.



■ Features

- Combination wave 1,2/50us - 8/20us impulses
- Serial resistor 40 Ohm included
- Ringwave 100kHz impulses
- Up to 4 wires can be tested
- Signal Bandwidth up to some 100kHz
- Manual coupling path selection

■ Benefits

International application – Specifically designed to meet and exceed the requirements of:

- IEC / EN 61000-4-5: 1995 Figure 10 and 11 (combination wave)
- IEC / EN 61000-4-5: 2005 Figure 11, 12 and 13 (combination wave)
- IEC 61000-4-12: 1995 Figure 9,10,13 and 14 (ring wave)

Safe and Easy - All the sockets are safety banana plugs to ensure maximum safety to the user. The selected coupling path can be seen at a glimpse.

Sturdy and Reliable – Careful component selection ensures that the PCD 126 will continue to operate under the most strenuous testing regimen.

Report Generation - The unit controller can automatically generate test reports without a computer. Add WinFEAT&R control and reporting software on a host PC to collect and collate data in any format you like.

■ Applications

- Unshielded asymmetrical data and signal lines
- Industrial equipment
- Other international requirements for combination wave and ring wave impulses on asymmetrical data- and control lines

■ Technical Specifications

Impulse shapes	Combination wave 1,2/50us - 8/20us Ring wave 100kHz	Z = 2 Ohm Z = 12 Ohm, 30 Ohm and 200 Ohm
Impulse amplitude	max. 6.6kV	for both impulse shapes
Serial Resistor	1 x 40Ω	for testing according IEC 61000-4-5
Coupling elements	Capacitor 0.5uF Capacitors 10uF Avalanche breakdown diodes (ABDs) Direct	for Combination wave for Ringwave 12 Ohm and 30 Ohm for all impulse shapes for customer specific coupling elements
Voltage on EUT lines	max. 375V _{DC} or 265V _{AC,RMS} max. 72V _{DC} or 50V _{AC,RMS}	with capacitors as coupling elements with ABDs as coupling elements
Signal bandwidth for the EUT signals	up to some 1kHz up to some 100kHz	with capacitors as coupling elements with ABDs as coupling elements

Other coupling elements on request.

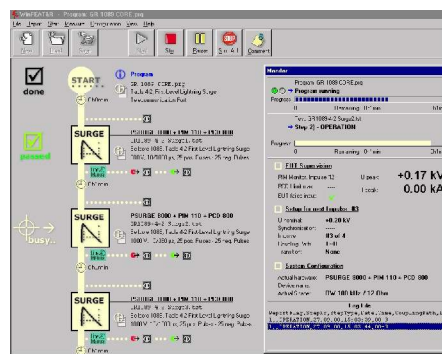
Weight and Dimensions

Weight	approx. 12 kg net	Dimensions	45 x 19.5 x 57 cm (w x h x d)
--------	-------------------	------------	-------------------------------

■ PCD 126 Art. No. 249803 Scope of supply

- Qty. 1 PCD 126
- Qty. 1 HV cable Fischer - Fischer
- Qty. 1 Cable set
- Qty. 1 Short circuit bridge
- Qty. 1 Users Manual

WinFEAT&R Control Window



■ Options and Accessories

- DEC 7 Decoupling unit for asymmetrical lines according IEC 61000-4-5 and IEC 61000-4-12.
- PSURGE 8000 Mainframe of the Surge Platform
- PIM 100 Combination Wave module up to 7.3kV
- PIM 110 Ring wave module up to 7.8kV with Z=12 Ohm, 30 Ohm and 200 Ohm
- PSURGE 4010 Combination wave 1.2/50us - 8/20us generator
- WinFEAT&R Control and reporting software. Runs under windows 98, NT, ME, 2000, XP
- ECOMPACT 4 Compact Tester up to 4.2kV

Headquarters
Haefely Test AG
 Lehenmattstrasse 353
 CH-4052, Basel
 Switzerland

+ 41 61 373 41 11
 + 41 61 373 45 99
EMC-sales@haefely.com

Locate your local
 sales representative at
www.haefelyEMC.com



HAEFELY EMC
 TECHNOLOGY

North American Office
Hipotronics Inc.
Haefely EMC Division
 1650 Route 22
 Brewster, NY 10509

++1 845 279 3644 x264
 ++1 845 279 2467
EMCsales@hubbell-haefely.com