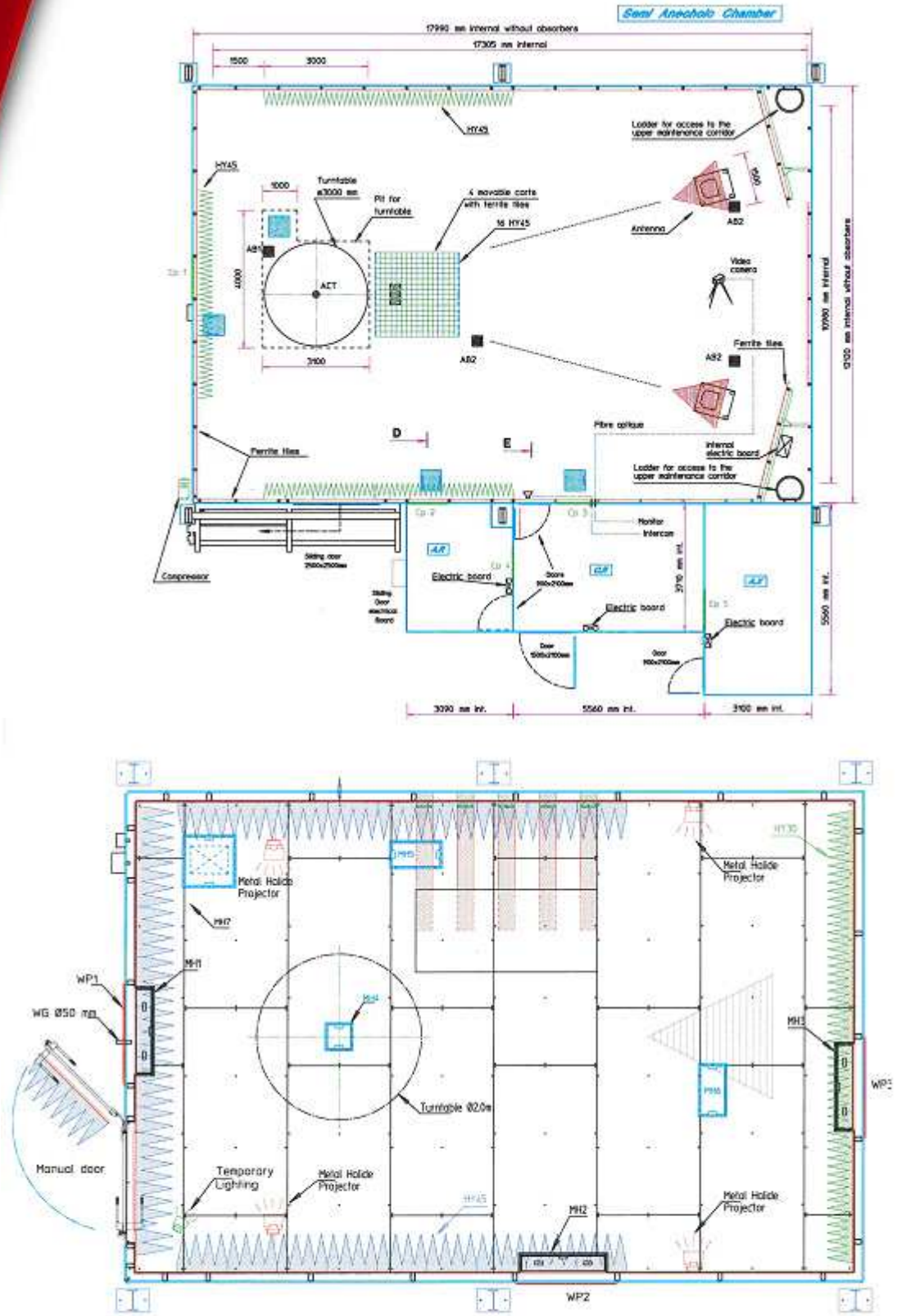


HOW TO CHOOSE AN EMC ANECHOIC CHAMBER ?



Shielded rooms • Anechoic chambers • Reverberation chambers • Electromagnetic absorbers

SIEPEL SAS - BP 87 - 56470 LA TRINITE-SUR-MER - FRANCE

Ph. +33(0)2.97.55.74.95 – Fax +33(0)2.97.55.84.55 – www.siepel.com – www.hyfral.com

EMC ANECHOIC CHAMBERS

SIEPEL propose standard EMC chambers corresponding to the following international standards or their equivalent:

- CISPR 22 (EN 55022):** Information technology equipment - Radio disturbance characteristics.
IEC 61000-4-3 (EN 61000-4-3): Testing and measurement techniques - Radiated, radio-frequency, electromagnetic field immunity test.
CISPR 25: Vehicles, boats and internal combustion engines - Radio disturbance characteristics for the protection of on-board receivers.
ISO11451: Road vehicles - Vehicle test methods for electrical disturbances.
DO160F: Environmental conditions and test procedures for Airborne equipments.
MIL STD 461F: Military Standard - Requirements for the control of electromagnetic interference characteristics of subsystems and equipment.

We can also offer custom designs and dimensions according to your needs. Please contact us for any particular request.

www.siepel.com www.hyfral.com

RESIDENTIAL AND COMMERCIAL USE PRODUCTS														
APPLICABLE STANDARDS									SIEPEL SOLUTIONS					
MEASUREMENT DISTANCE in m	EMI Compliant CISPR 22			EMS Compliant IEC 61000-4-3			CHAMBERS REFERENCES	TYPE OF ABSORBERS	INTERNAL DIMENSIONS BETWEEN ABSORBERS L x W x H in m	EXTERNAL DIMENSIONS INCLUDING SUPPORT FRAME L x W x H in m				
	Test Volume	NSA (30 MHz - 1 GHz)	Svswr (1 - 18 GHz)	MEASUREMENT DISTANCE in m	FREQUENCY RANGE	FIELD UNIFORMITY								
	DIAMETER in m	HEIGHT in m	FREQUENCY RANGE	NSA MAXIMUM DEVIATION	MEASUREMENT DISTANCE in m	Svswr LEVEL								
PRE COMPLIANCE	1	1.2	1.5	30 MHz - 1 GHz	+/-4 dB	1	<6 dB	1	80 MHz - 18 GHz	0.5 x 0.5 m (100%)	HERA 1F	Ferrites + Hybrids + Foam Pyramidal	4.45 x 2.30 x 2.10	5.00 x 3.15 x 2.65
	3	1.2	2	200 MHz - 1GHz	+/-4 dB	3	<6 dB	3	80 MHz - 18 GHz	1.5 x 1.5 m (75%)	HERA 3P	Foam Pyramidal	7.00 x 3.00 x 2.20	8.15 x 4.35 x 3.00
	3	1.2	2	30 MHz - 200 MHz 200 MHz - 1 GHz	+/-6 dB +/-4 dB	1	<6 dB	3	80 MHz - 18 GHz	1.5 x 1.5 m (75%)	HERA 3F	Ferrites + Hybrids + Foam Pyramidal	7.20 x 2.50 x 2.70	7.90 x 3.40 x 3.25
	3	1.2	2	30 MHz - 1 GHz	+/-4 dB	3	<6 dB	3	80 MHz - 18 GHz	1.5 x 1.5 m (75%)	HESTIA 3F	Ferrites + Hybrids + Foam Pyramidal	7.70 x 3.85 x 4.15	8.55 x 5.20 x 4.95
FULL COMPLIANCE	3	2	2	30 MHz - 1 GHz	+/-4 dB	3	<6 dB	3	26 MHz - 18 GHz	1.5 x 1.5 m (75%)	HERMES 3	Ferrites + Hybrids + Foam Pyramidal	8.25 x 4.80 x 4.80	8.95 x 6.60 x 6.00
	3	1.5	2	30 MHz - 1 GHz	+/-4 dB	3	<6 dB	3	26 MHz - 18 GHz	1.5 x 1.5 m (75%)	HERMES 3	Ferrites + Hybrids + Foam Pyramidal	7.75 x 4.80 x 4.80	8.45 x 6.60 x 5.85
	5	3	3	30 MHz - 1 GHz	+/-4 dB	3	<6 dB	3	26 MHz - 18 GHz	1.5 x 1.5 m (75%)	HERMES 5	Ferrites + Hybrids + Foam Pyramidal	12.00 x 6.30 x 5.75	12.70 x 8.30 x 6.90
	10	4	3	30 MHz - 1 GHz	+/-4 dB	3	<6 dB	3	26 MHz - 18 GHz	1.5 x 1.5 m (75%)	HERMES 10	Ferrites + Hybrids + Foam Pyramidal	18.45 x 11.80 x 7.90	19.15 x 13.50 x 9.20
	3	1.2	1	30 MHz - 1 GHz	+/-4 dB	3	<6 dB	3	80 MHz - 18 GHz	1.5 x 1.5 m (75%)	ATHENA 3 (Fully anechoic)	Ferrites + Hybrids + Foam Pyramidal	7.50 x 4.65 x 4.40	8.20 x 6.20 x 5.40

AUTOMOTIVE COMPONENTS							
APPLICABLE STANDARDS				SIEPEL SOLUTIONS			
MEASUREMENT DISTANCE in m	EMI Compliant CISPR 25	EMS Compliant ISO11451	CHAMBERS REFERENCES	TYPE OF ABSORBERS	INTERNAL DIMENSIONS BETWEEN ABSORBERS L x W x H in m	EXTERNAL DIMENSIONS INCLUDING SUPPORT FRAME L x W x H in m	
1	70 MHz - 18 GHz	200 MHz - 18 GHz	CHRONOS 1P	Foam Pyramidal	4.90 x 3.65 x 2.75	6.45 x 5.20 x 3.65	
1	(30) 70 MHz - 18 GHz	200 MHz - 18 GHz	CHRONOS 1F	Ferrites + Hybrid	4.95 x 3.65 x 2.75	5.65 x 4.35 x 3.20	

Please contact us for measurements on civilian or military vehicles, or other ISO and CISPR standards applications.

AERONAUTIC AND MILITARY DEVICES						
APPLICABLE STANDARDS			SIEPEL SOLUTIONS			
MEASUREMENT DISTANCE in m	Compliant DO160F & MIL STD 461F		CHAMBERS REFERENCES	TYPE OF ABSORBERS	INTERNAL DIMENSIONS BETWEEN ABSORBERS L x W x H in m	EXTERNAL DIMENSIONS INCLUDING SUPPORT FRAME L x W x H in m
1	80 MHz - 40 GHz - Reflectivity better than: - 6 dB from 80 to 250 MHz - 10 dB above 250 MHz		ARES 1 P	Foam Pyramidal	3.65 x 2.80 x 2.20	5.00 x 4.15 x 3.00
1	(30) 80 MHz - 40 GHz - Reflectivity better than: - 6 dB from 80 to 250 MHz - 10 dB above 250 MHz		ARES 1 F	Ferrites + Hybrid	3.80 x 2.80 x 2.10	4.70 x 3.70 x 2.65

Please contact us for measurements on military devices or other military applications.

- We are at your disposal for advise on electromagnetic absorbers suitable to your needs (for existing chambers, for example) -

Shielded rooms • Anechoic chambers • Reverberation chambers • Electromagnetic absorbers

SIEPEL SAS - BP 87 - 56470 LA TRINITE-SUR-MER - FRANCE

Ph. +33(0)2.97.55.74.95 - Fax +33(0)2.97.55.84.55 - www.siepel.com - www.hyfral.com

SIEPEL SCOPE OF WORK



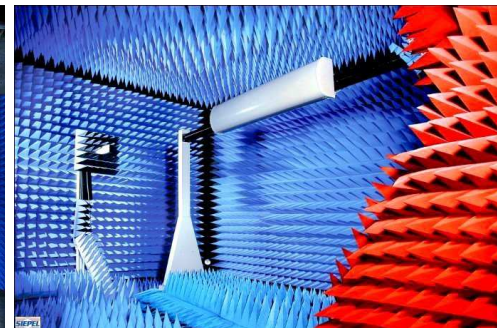
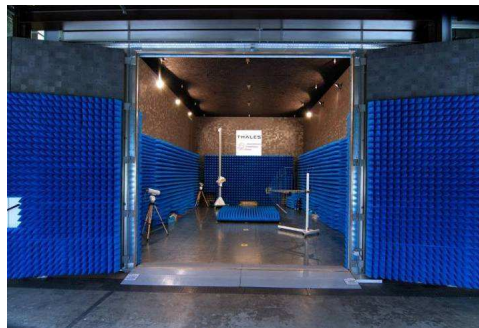
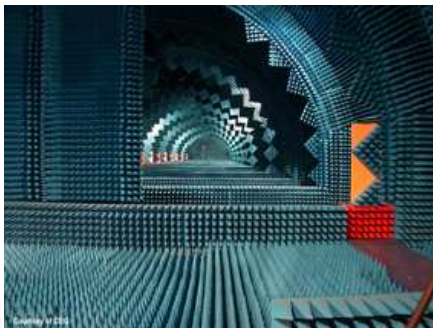
More than 23 years experience

More than 20 Representatives all over the world



Please contact us for other EMC and non EMC applications:

- Reverb chambers,
- Antenna radiation pattern measurements,
- Telecom applications,
- RCS, PIM, Near Field measurements
- Other MILSTD standards applications.



Domestic sales:
Stéphane TANGUY
s.tanguy@siepel.com

Customer Relations:
Stéphanie JEGAT
s.jegat@siepel.com

International sales:
Vincent KEYSER
v.keyser@siepel.com

Shielded rooms • Anechoic chambers • Reverberation chambers • Electromagnetic absorbers

SIEPEL SAS - BP 87 - 56470 LA TRINITE-SUR-MER - FRANCE

Ph. +33(0)2.97.55.74.95 – Fax +33(0)2.97.55.84.55 – www.siepel.com – www.hyfral.com