

# BK894 & BK895

500 kHz / 1 MHz Bench LCR Meters



**BK894 & BK895**  
500 kHz / 1 MHz Bench LCR Meters

# Overview

- ▶ Measurement parameters: L, C, R, G, X, Z, Y, B,  $\theta$ , Q, D, DCR
- ▶ Basic accuracy: 0,05%
- ▶ DCR measurement range: 0.01  $\Omega$  - 100 M $\Omega$
- ▶ Test frequency range: 500 kHz (BK894) and 1MHz (BK895)
- ▶ 4-terminal fixture and Kelvin clip test leads included
- ▶ Standard USB, LAN, and GPIB (895 only) interface for remote control using SCPI commands



**BK894 & BK895**  
500 kHz / 1 MHz Bench LCR Meters

# Features & Benefits

- ▶ AC test signal voltage adjustable up to 2 Vrms
- ▶ 3 AC current ranges
- ▶ Built-in DC bias source adjustable from -5V to +5V / -50 mA to +50 mA
- ▶ Fast measurement speed up to 13 ms/reading to increase manufacturing throughput
- ▶ Adjustable measurement speed for fast readout or better accuracy
- ▶ 201-point programmable list
- ▶ Test signal voltage and current monitoring
- ▶ 1 m and 2 m cable compensation



**BK894 & BK895**  
500 kHz / 1 MHz Bench LCR Meters

**BK PRECISION**  
ELECTRONIC TEST INSTRUMENTS

**Sefram**

# Programmable List sweep

Use the built-in linear and logarithmic sweep function, supporting up to 201 sweep points, to conveniently display, analyze and store primary and secondary parameters of a component. Sweep test frequency, AC source voltage and current levels, DC bias source voltage and current levels. A delay can be programmed after each sweep point. The list sweep can be triggered internally, manually or externally and executed in sequence or step mode.

< LIST SWEEP DISP >					MEAS DISPLAY
MODE	FREQ[Hz]	Cs[F]	D [ ]	CMP	BIN NO.
001	20.0000	102.797n	0.00162	L	
002	5.01990k	101.775n	0.00773	P	
003	10.0198k	101.408n	0.00973	P	
004	15.0197k	101.149n	0.01098	P	BIN COUNT
005	20.0196k	100.946n	0.01183	P	
006	25.0195k	100.780n	0.01255	P	
007	30.0194k	100.637n	0.01315	P	LIST SWEEP
*008	35.0193k	100.511n	0.01371	P	
009	40.0192k	100.400n	0.01423	P	
010	45.0191k	100.301n	0.01466	P	

**BK894 & BK895**

500 kHz / 1 MHz Bench LCR Meters

# Bin sorting function

Quickly sort components using the instrument's 9 primary BINs, a secondary BIN and out-of-specification BIN. The results can be displayed in a table on-screen or output via the handler interface. High and low limits for each bin can be set up in absolute, tolerance or sequential mode with Pass/Fail indicator.

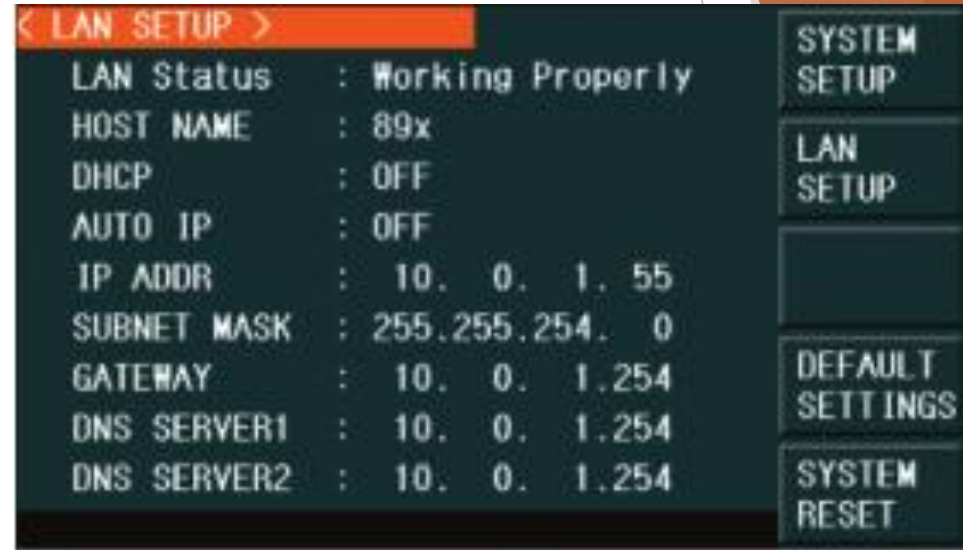


**BK894 & BK895**

500 kHz / 1 MHz Bench LCR Meters

# Remote PC control

Integrate your LCR meter into an automated test system and control it from a PC using SCPI commands via the RS232, USB, LAN, or GPIB (895 only) interface.



**BK894 & BK895**  
500 kHz / 1 MHz Bench LCR Meters

# Transformer measurements (optional)

Using optional test fixture TL89T1, the 894 and 895 can test the primary and secondary inductance  $L_1$ ,  $L_2$ , turn ratio ( $N$ ,  $1/N$ ), mutual inductance ( $M$ ), and primary and secondary direct-current resistance ( $R_2$ ) of a transformer directly. Additionally, the two common transformer parameters winding equivalent capacitance  $C_o$  and leakage inductance  $L_k$  can be characterized indirectly.

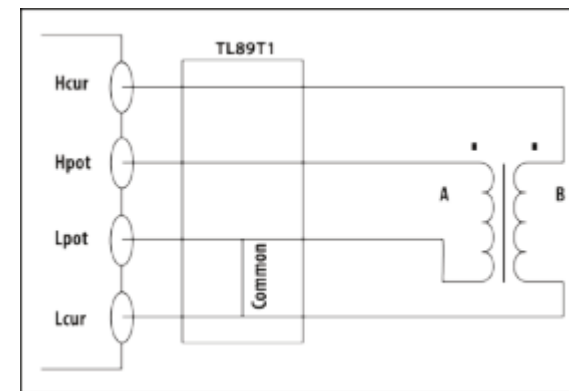
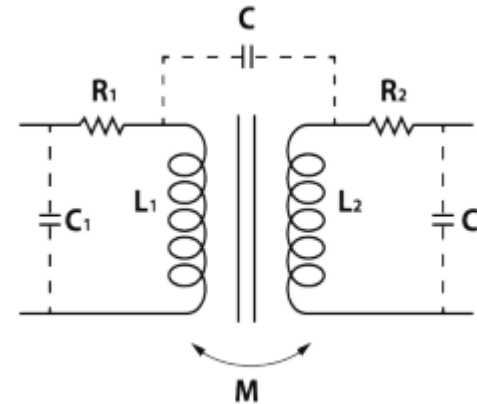


Diagram showing the TL89T1 connected to a transformer under test

**BK894 & BK895**

500 kHz / 1 MHz Bench LCR Meters

# Price Information



BK894 – 500 kHz Bench LCR Meter → 3625€

BK895 – 1 MHz Bench LCR Meter → 5525€

**BK894 & BK895**  
500 kHz / 1 MHz Bench LCR Meters



# Flexible test accessories



- Kelvin clips (TL89K1) → 49€
- Test fixture (TL89F2) → 95€
- Shorting bar (TLBSB) → 9€
- Transformer test fixture (TL89T1) → 95€

**BK894 & BK895**  
500 kHz / 1 MHz Bench LCR Meters

# Competitor overview

Model	B&K Precision			Keysight		Wayne Kerr Elect.	Instek
	891	894	895	E4980AL-052	E4980AL-102	WK43100	GW-8101G
List price	1 391,00 €	3 625,00 €	5 525,00 €	5 755,00 €	7 673,00 €	6 650,00 €	6 258,00 €
Frequency range	20 Hz - 300 kHz	20 Hz - 500 kHz	20 Hz - 1 MHz	20 Hz - 500 kHz	20 Hz - 1 MHz	20 Hz - 1 MHz	20 Hz - 1 MHz
Basic accuracy	0,10%	0,05%		0,05%		0,10%	0,10%
AC test signal range (voltage / current)	0.5 Vrms, 1 Vrms	5 mV - 2 Vrms 50/100/166.7 $\mu$ A - 20/40/66.7 mA		100 $\mu$ V - 2 Vrms 1 $\mu$ A - 20 mArms		10 mV - 2 Vrms	10 mV - 2 Vrms
AC source impedance	100 $\Omega$ , fixed	30 / 50 / 100 $\Omega$ , selectable		100 $\Omega$ , fixed		100 $\Omega$ , fixed	100 $\Omega$ , fixed
Test signal monitoring	--	✓		✓		--	✓
Auto Level control (ALC)	--	✓		✓		--	--
Built-in DC bias source	--	-5 V to +5 V / -50 mA to +50 mA		1.5 V / 2 V		2 V	--
DCR	✓	✓		✓		✓ (option)	✓
Cable length compensation	--	1 m / 2 m		1 m / 2 m / 4m		--	--
Correction	Open/Short	Open/Short/Load		Open/Short/Load		Open/Short	Open/Short
List sweep (number of test points, test parameters)	300 points: Frequency	201 points: Frequency, AC and DC bias voltage / current		201 points: Frequency, AC and DC bias voltage / current		8 points: Frequency	30 points: Frequency and AC voltage
Handler interface	--	✓		--		✓ (option)	--
Remote interfaces	USB (Virtual COM), GPIB, & LAN	USB (USBTMC or virtual COM), RS232, LAN, GPIB (895 only)		USBTMC, LAN, GPIB		RS232, GPIB	RS232, GPIB
Included accessories	4-wire Kelvin clip test lead	4-wire Kelvin clip test lead, 4-terminal test fixture, shorting		--		4-wire Kelvin clip test lead	4-wire Kelvin clip test lead

**BK894 & BK895**  
500 kHz / 1 MHz Bench LCR Meters



# SEFRAM

32, Rue E. Martel – BP55  
F42009 – Saint-Etienne Cedex 2  
France

Phone: **0033 4 77 59 01 01**  
Fax: **0033 4 77 57 23 23**

[sales@sefram.fr](mailto:sales@sefram.fr)

**BK894 & BK895**  
500 kHz / 1 MHz Bench LCR Meters

