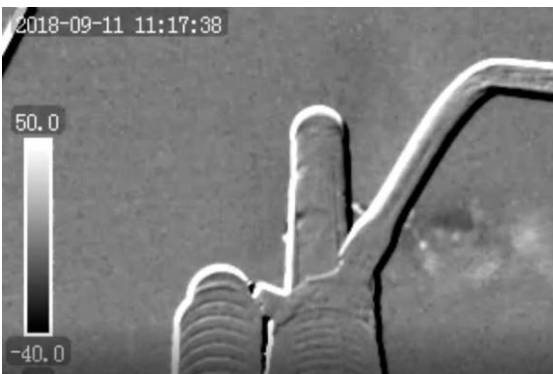
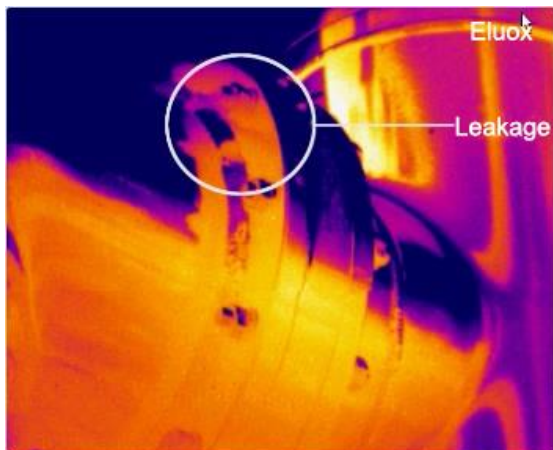




Eluox Automation

Eluox EIRC20CG SF6 Gas Detection Thermal Camera



Overview

Employed passive thermal imaging technology, EIRC20CG SF6 gas detection thermal camera can quickly locate SF6 leakage point at long distance without power supply shutdown. At the same time, it can also detect the leakage of other various types of gas as well as thermographic inspection of electrical distribution system items and other equipment via thermal imaging.

Features

- Cooled QWIP detector
- Thermal sensitivity: $\leq 0.025^{\circ}\text{C}$
- Gas detection sensitivity: $\leq 0.001\text{ml/s}$ (SF6)
- SF6 & other gas detection
- Thermal temperature measurement
- Photo and video recording function
- Built-in 5.0 MP digital camera
- Foldable and 270° rotatable display

Applications:

- Electricity
- Chemical Industry
- Environmental organization
- Research Institute

Chengdu Eluox Automation Co., Ltd.

No.134, Qingjiang East Road, Chengdu 610072 R.P. China
www.eluox.cn eluox@yahoo.com Tel: +8618349338595

Item		Value
Detector	Type	High sensitivity cooled QWIP Detector
	Array size	320x256
	Pixel pitch	30μm
	Spectral range	9.8 ~ 11.2μm
	Thermal sensitivity	25mK
	Gas sensitivity	≤ 0.001ml/s (SF6)
Lens	Field of view/ focal length	10° x 7.5° / 55mm
	Minimum imaging distance	2m
	Spatial resolution	0.55mrad
	Focus	Manual
Image performance	LCD	HD 5.0", 800x480, foldable and 270° rotatable
	Visual camera	5 mega pixel CMOS, auto focus, 1 LED fill light
	Frame rate	50Hz/60Hz
	Amplification	1 ~ 8x digital zoom
	Palette	12 palettes (including iron hot, rainbow, black hot, white hot, etc.)
	Contrast/Brightness	Auto/Manual
Measurement	Range	-20°C -- +500°C
	Accuracy	±2°C or ±2% of reading, whichever is greater
	Measuring mode	Up to 10 movable spots, up to 5 movable areas(max, min, avg.), 3 movable circles, vertical/horizontal movable line, isothermal analysis, temp. difference, alarm (sound, color)
	Measurement correction	Auto / manual
	Emissivity correction	Adjustable from 0.01 to 1.0 or select from list of materials
	Background temperature correction	Automatically correct according to background temperature
	Atmospheric transmissivity correction	Auto (according to the input distance, relative humidity, ambient temperature)
	Setting	Date, time, temperature unit (°C/°F/K), language (Chinese, English, French, German, Italian, Japanese, Korean, Polish, Portuguese, Russian, Spanish.)
Storage	Memory card	8G SD card, extendable to 32G
	Storage mode	Auto/manual single frame image saving,, video recording
	Infrared image	JPEG, with 14 bit measured data
	Visible light image	JPEG
	Video	MPEG4 / H.262, each segment can be up to 1hour
	Voice annotation	40s, saved together with image
	Timed storage	Every 10s ~ 24h
Pointer	Laser	635nm(red), II Class, 1mW
Power supply	Battery	rechargeable Li-ion battery
	Operation time	2 hours continuous operation (room temperature)
	Charging	Intelligent charge or power supply adaptor online charge
	External power	DC 14V
	Charging type	Smart charging stand or DC14V 3A power adapter
	Power saving mode	Available
Interface	External DC input	available
	Audio output	Available
	Video output	HDMI
	SD card slot	Yes
	Tripod	¼"-20

Item		Value
Environment parameters	Operating temperature	-15°C ~ +40°C
	Storage temperature	-20°C ~ +50°C
	Humidity	≤95% (non-condensing)
	EMC	EN61000-604 & EN61000-6-2, FCC47CFR part15 class A, EN61000-4-8, L5
	Vibration resistance	2G (IEC60068-2-6)
	Shock resistance	25G (IEC60068-2-29)
	Encapsulation	IP54 (IEC60529)
Physical feature	Dimensions	308mm x 142mm x 166mm
	Weight	≤2.5KG (with standard lens & battery)
Gas detection	Sulfur Hexafluoride (SF6)	Yes
	Ammonia (NH3)	Yes
	Cyanoacrylate	Yes
	Acetic acid	Yes
	Freon-12	Yes
	Methyl Ethyl Ketone (MEK)	Yes
	Acetyl chloride	Yes
	Allyl bromide	Yes
	Allyl fluoride	Yes
	Allyl chloride	Yes
	Methyl bromide	Yes
	Chlorine dioxide	Yes
	Ethyl cyanoacrylate	yes
	Ethylene	Yes
	furan	Yes
	hydrazine	Yes
	Methyl vinyl ketone	Yes
	propylene	Yes
	trichloroethylene	Yes
	Uranyl fluoride	Yes
Vinyl chloride	Yes	
Allyl nitrile	Yes	
Vinyl ether	Yes	
Kit	Thermal Camera (with standard lens)	1PCS
	Lithium batteries	2PCS
	Battery charger	1PCS
	Power adapter	1PCS
	Vehicle power converter	1PCS
	SD card	1PCS
	Card reader	1PCS
	Software CD	1PCS
	USB WIFI Module	1PCS
	Carry case	1PCS
	Warranty card	1PCS
	Certificate	1PCS
	User Manual	1PCS