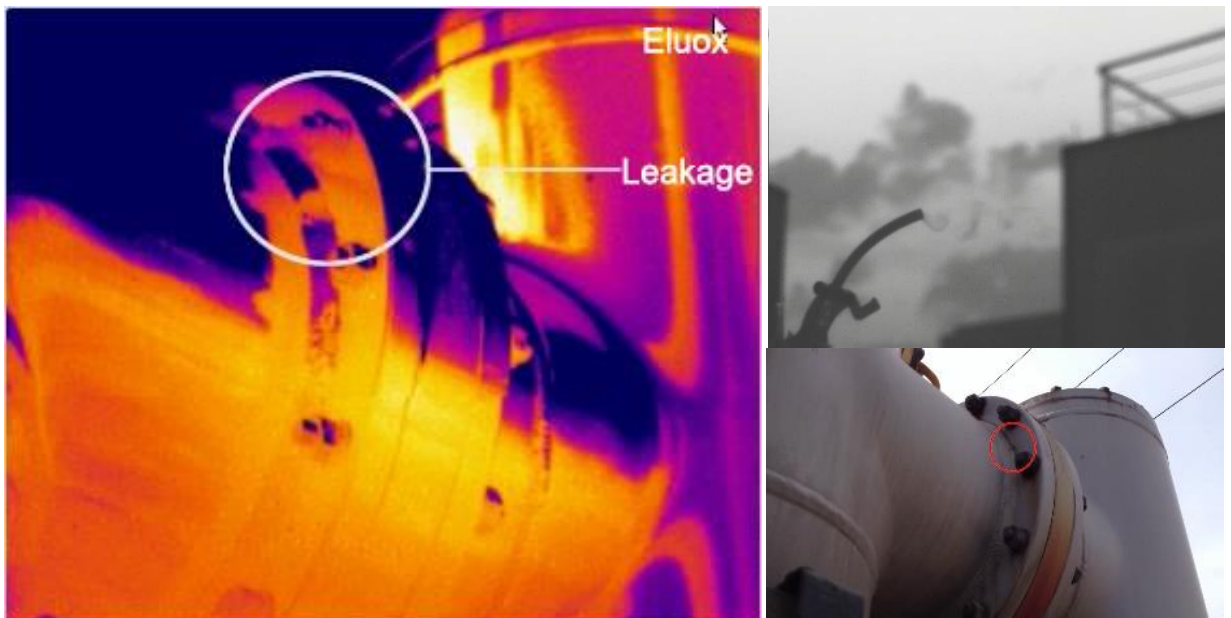




Employed passive thermal imaging technology, EIRC25CG gas detection thermal camera can locate SF6 gas leakage point at long distance without power supply shutdown; Integrated cooled QWIP detector contributes excellent NETD of 25mK, superior image quality and accurate temperature measurement; No needs of specific background or auxiliary light, suitable for any on-site applications; HD OLED view finder, combined with 5" touch rotatable screen, suitable for any indoor and outdoor applications.



**Chengdu Eluox Automation Co., Ltd.**

No.134, Qingjiang East Road, Chengdu 610072 R.P. China  
[www.eluox.cn](http://www.eluox.cn) [eluox@yahoo.com](mailto:eluox@yahoo.com) Tel: +8618349338595

Item		Value	
Detector	Type	cooled QWIP Detector	
	Array size	320x256	
Image characteristics	Field of view/ min focus distance	14.5° x 10.8° / 0.5m	24° x 18° / 0.3m
	Spatial resolution	0.79mrad	1.13 mrad
	Thermal sensitivity	≤0.025°C (25mK) @ 30 °C	
	Gas leakage detection sensitivity	0.001ml/s (SF6)	
	Frame rate	60Hz	
	Zoom	1~4x digital zoom	
	Spectral range	9.8 ~ 11.2μm, peak 10.55μm	
	CCD	1.3 million CMOS	
Image display	Viewfinder	0.6" color OLED, with zoom	
	LCD	HD 5" color digital touch screen, 800 x 600 pixel	
Measurement	Range	-40°C -- +500°C	
	Accuracy	±2°C or ±2% of reading, whichever is greater	
	Measuring mode	Up to 10 movable spots, up to 5 movable areas(max, min, avg.), 3 movable circles, up to 2 movable lines, line profiles, isotherms, temperature difference, alarm (sound, color)	
	Measurement correction	Automatic / manual	
	Atmospheric transmittance correction	Automatic, according to the input target distance, relative humidity, ambient temperature	
	Background temperature correction	Automatically correct according to background temperature	
	Emissivity adjustment	Variable from 0.01 to 1.0 (step=0.01), or corrected through a predefined material emissivity list	
	Color palette	11 palettes changeable (Iron, Rainbow, grey inverted, etc.	
	Image adjustment	Auto/manual adjustment of contrast and brightness	
Setting	Date, time, temperature unit (°C/°F/K), language		
Storage	Storage card	8G SD card, storage > 6000 images	
	Storage mode	Automatic/manual single image storage, continuous visible light, infrared video recording	
	Infrared image	JPEG, with 14 bit measured data	
	Visible light image	JPEG	
	Thermal video	MPEG or 14 bit thermal image with measurement data	
	Visible light video	MPEG-4	
	Voice annotation	40s, saved together with image	
	Image improvement	Averaging (S2, S4, S8, S16)	
Pointer	Laser	635nm(red), II Class, 1mW	
Power supply	Battery	rechargeable Li-ion battery	
	Operation time	3 hours continuous operation	
	Charging	Intelligent charge or power supply adaptor online charge	
	External power	DC 10~15V	
	Power saving mode	Available	
Interface	External DC input	available	
	Audio output	Available	
	Video output	HDMI	
	USB	USB 2.0, image, measured data, video record transfer to PC	
Environment	Working temperature range	-15°C ~ +50°C	
	Humidity	≤90% (non-condensing)	
	Encapsulation	IP54	
Physical feature	Dimension	335mm x 160mm x 172mm	
	Weight	3KG	