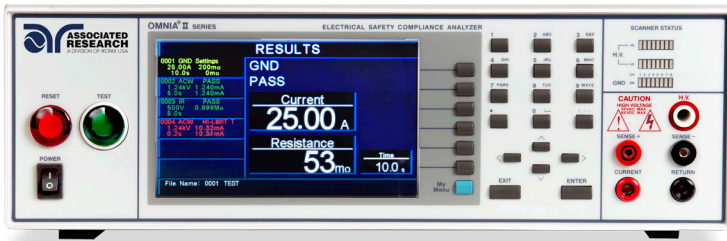




# Quick Start Guide

## OMNIA<sup>®</sup> II

Models 8204/8254, 8206/8256, 8207/8257



### SAFETY CHECKLIST

- S**urvey the test station. Make sure it is safe & orderly.
- A**lways keep unqualified/unauthorized personnel away from the test area.
- F**amiliarize yourself with safety protocols in the event of a problem.
- E**xercise caution and never touch products or connections during a test.
- T**rain operators. Never touch clips directly and always connect the return lead first.
- Y**ou should always know when a test is being performed.



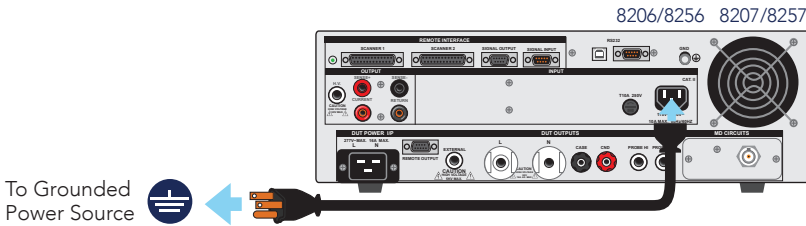
WARNING: THIS GUIDE WAS CREATED FOR OPERATORS HAVING SOME FAMILIARITY WITH ELECTRICAL SAFETY TESTING. AN ELECTRICAL SAFETY TESTER PRODUCES VOLTAGES AND CURRENTS THAT CAN CAUSE HARMFUL OR FATAL ELECTRIC SHOCK. TO PREVENT ACCIDENTAL INJURY OR DEATH, THESE SAFETY PROCEDURES MUST BE STRICTLY OBSERVED WHEN HANDLING AND USING A TEST INSTRUMENT. CONTACT US AT [INFO@ARISAFETY.COM](mailto:INFO@ARISAFETY.COM) FOR MORE INFO ON HOW TO GET TRAINED ON ELECTRICAL SAFETY TESTING.

# INSTRUMENT SETUP

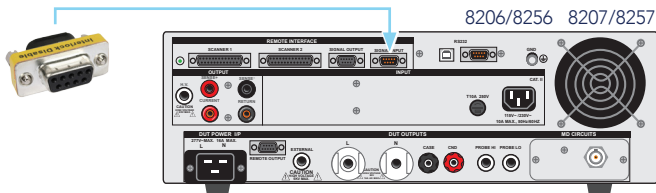


WARNING: LOCATE A SUITABLE TESTING AREA WITH A CLASS I GROUNDED OUTLET. BE SURE THAT YOUR CLASS I OUTLET HAS BEEN TESTED FOR PROPER WIRING. READ THE SAFETY CHECKLIST OF THIS GUIDE BEFORE STARTING TO TEST.

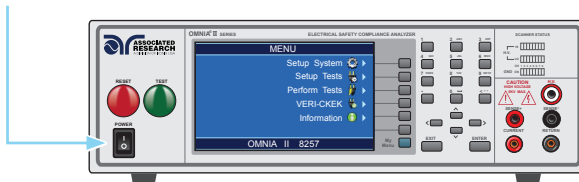
- 1 Connect the female end of the standard NEMA style power cord into the input power receptacle on the rear panel of the instrument. Plug the male end of the cord into a grounded power source.



- 2 Connect the interlock disable key to the signal input connector on the rear panel of the instrument. This is required to run a test.



- 3 Turn the POWER switch to ON.



# TEST SETUP

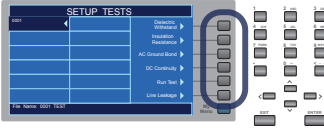
## ADD NEW TESTS



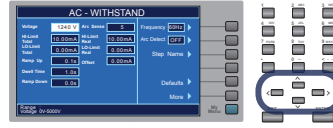
From the Main Menu select the Setup Tests soft key.



Select the Add soft key.



Select a Test Type.



Use the arrow keys to choose a parameter to edit.



Enter the value for each parameter by using the alpha/numeric key pad. Select ENTER to save and go to the next parameter.



Select EXIT key followed by the ENTER key to save your selection and return to the Setup Tests screen.

## EDIT TEST PARAMETERS

After a test has been set, you may edit the test parameters at any time.



Use the arrow keys to choose a test to edit within the Setup Tests screen.



Select the Edit soft key.



Use the arrow keys to choose a parameter to edit.



Enter the value for each parameter by using the alpha/numeric key pad. Select ENTER to save and go to the next parameter.



Select EXIT key.



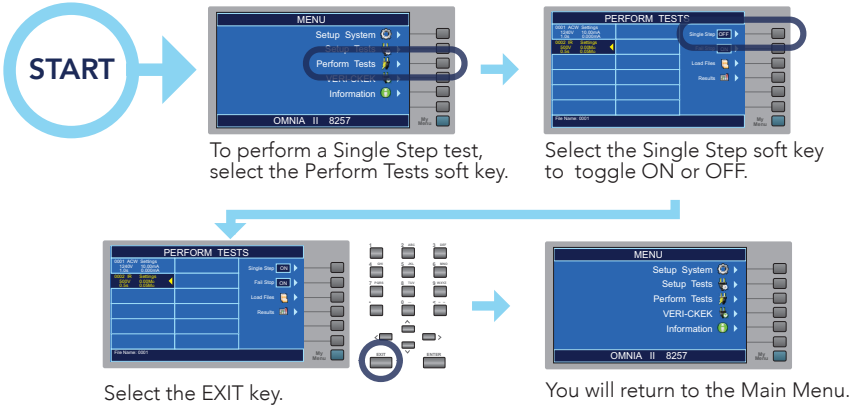
You will return to the Setup Tests screen.

# TEST SETUP

## SET TEST SEQUENCES

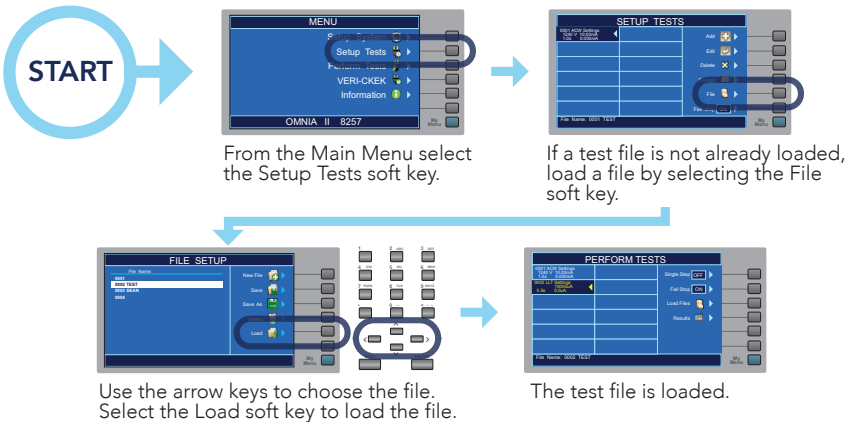
Adding multiple tests to the same screen automatically creates a multiple step test sequence.

**Note:** The test will run in a sequential order unless Single Step control is set to ON.

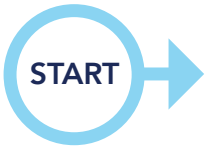


## SET TEST SEQUENCES

Test programs can be saved and loaded as files for easy recall of test conditions.



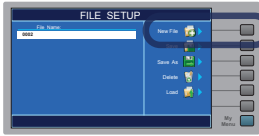
# CREATE A NEW TEST FILE



From the Main Menu select the Setup Tests soft key.



Select the File soft key.



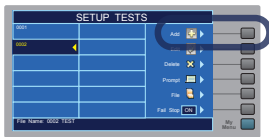
Select the New File soft key.



Use the alpha/numeric key pad to give the file a name. Select ENTER to save.



This returns you to the Setup Tests menu with a blank sequence. The file name is displayed at the bottom.



You may begin setting up a full test sequence by selecting the Add soft key.

# DELETE A TEST STEP



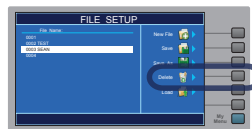
From the Main Menu select the Setup Tests soft key.



If a test file is not already loaded, load a file by selecting the File soft key.



Select the Load soft key to load the file.



Use the arrows to select the test you would like to delete. Select the delete soft key to delete the Test Step.

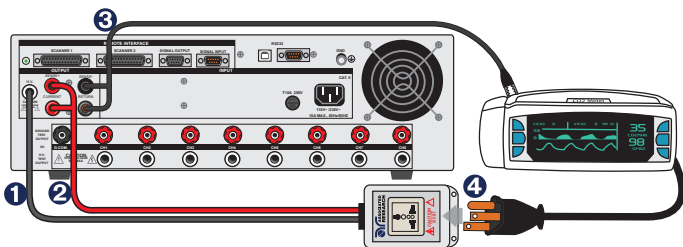
# TEST CONNECTIONS

## ADAPTER BOX CONNECTIONS (8204/8254)

The adapter box (P/N 38482) provides an easy way to connect the OMNIA II to a device under test (DUT).

**Note:** If you are testing a Class I product, safety agencies may require you to perform a Ground Bond test on the ground circuit of the DUT along with the Hipot test.

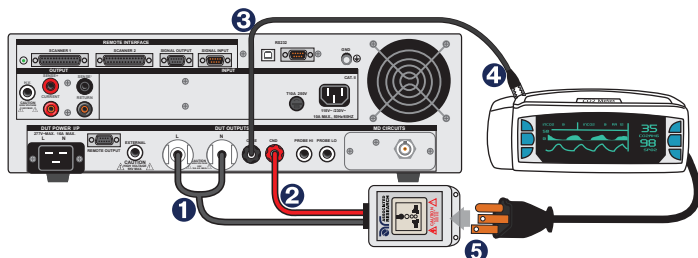
- 1 Using the output ports on the rear panel, plug the black high voltage lead in the High Voltage terminal.
- 2 Plug the sense lead into the Sense (+) terminal. Plug the high current test lead into the Current terminal. These two red leads act as the ground connection.
- 3 Connect the ground return clip (P/N 38490) to the dead metal on the chassis of the DUT. Plug the sense lead into the Sense (-) terminal. Plug the return lead into the Return terminal. Always check to make sure a good connection is made between the DUT and the return clip.
- 4 Plug the power cord of the DUT into the adapter box receptacle.



## ADAPTER BOX CONNECTIONS (8206/8256 & 8207/8257)

**Note:** Use the rear output terminal for connecting the adapter box (P/N 38578) on the 8206/8256 and 8207/8257 models.

- 1 Using the DUT output ports on the rear panel, plug the line lead from the adapter box into the L terminal and the neutral lead into the N terminal.
- 2 Attach the red ground lead from the adapter box to the GND terminal.
- 3 Attach the black case return (P/N CBLHC40-10TL) lead into the case terminal.
- 4 Connect the ground return clip to dead metal on the chassis of the DUT.
- 5 Plug the line power cord from the DUT into the adapter box receptacle.



# TEST CONNECTIONS



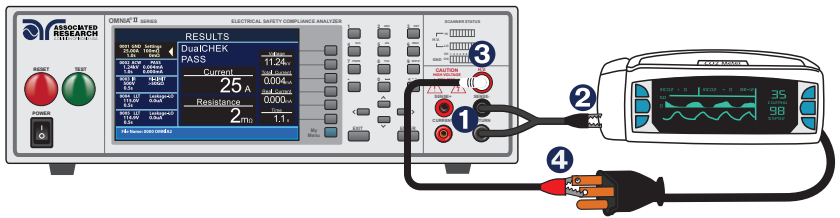
WARNING: DO NOT TOUCH THE DEVICE UNDER TEST ONCE YOU START THE TEST.

## TEST LEAD CONNECTIONS

If there is no ground circuit present on the DUT, you can use test leads to connect the OMNIA II to the DUT.

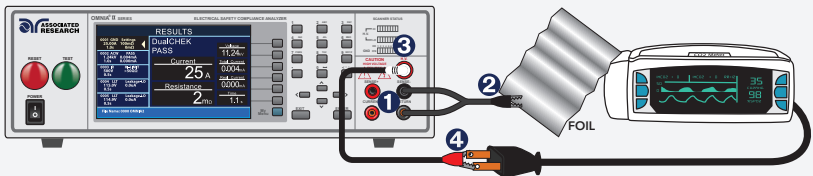
- 1 Plug the black return lead (P/N 38490) into the Return terminal. Plug black sense lead into the Sense (-) terminal.
- 2 Attach the clip-terminated end of the return lead to the dead metal on the chassis of the DUT.
- 3 Connect the high voltage lead (P/N 4040A-08) into the High Voltage terminal on the front panel of the instrument.
- 4 Attach the high voltage lead to the current-carrying conductors of the DUT.

## Class I Product



**Did you know?** When performing a **Ground Bond test** on a **Class I product** connect the red high current lead (P/N 38489) into the current terminal and red sense lead into the sense (+) terminal. The clip at the other end will connect to the ground pin of the DUT plug.

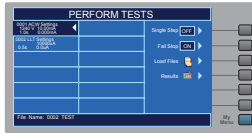
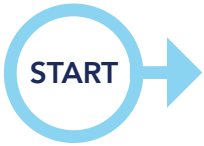
## Class II Product



**Did you know?** If necessary, a 10 x 20 cm piece of foil can be attached to the enclosure to simulate a full hand contact to the DUT. This foil acts as the return point. The return and sense (-) terminal are attached to the foil. Always check to make sure you made a good connection between the DUT and the return clip.

# RESULTS

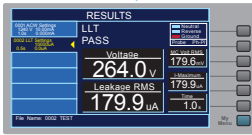
View the results from performed tests. Results include test type, reason for failure, and test parameters.



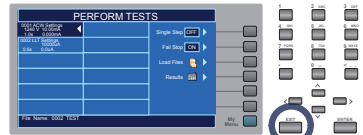
From the Perform Tests screen, use the arrow keys to choose the file to see the test results.



Select the Results soft key.



Results include test type, reason for failure and test parameters.



Select the EXIT key to return to the Perform Tests screen



SCAN FOR  
QUICK  
START  
VIDEO

Safety Is Our Only Focus®



For additional information about these and other key features of the OMNIA® II, please consult the full Operation and Service Manual or call us toll-free 1-800-858-TEST (8378) or +1-847-367-4077 ©2017 Associated Research • arisafety.com

FOLLOW US!

