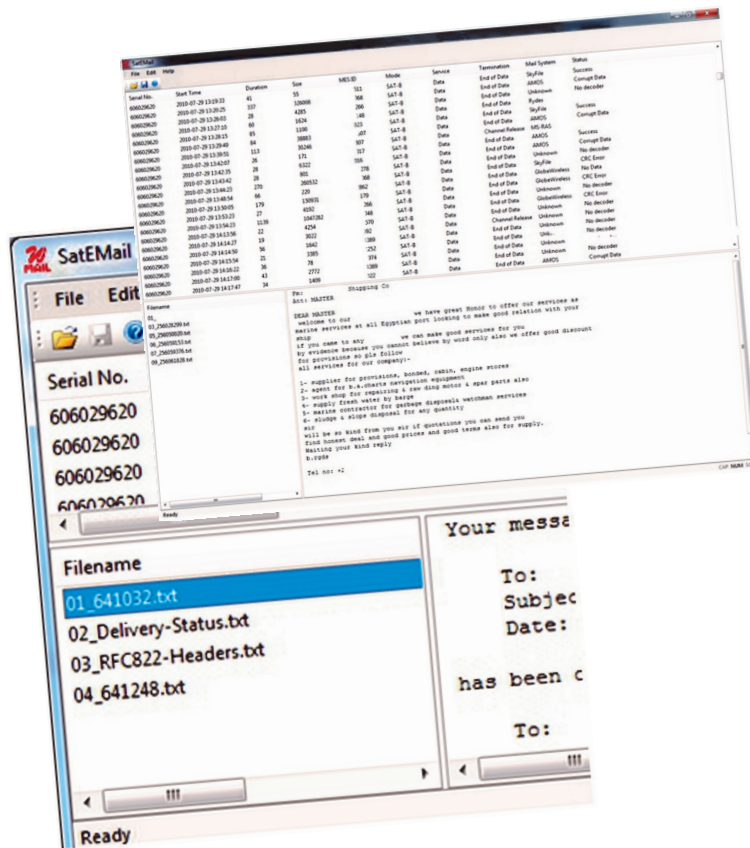


WAVECOM® W-SAT-email-Decoder



Satellite communications systems play an increasingly important role in today's communication networks, carrying voice, fax, and data signals. The Wavecom Satellite Email Decoder is a standalone application which can decode data streams acquired from a wide range of different satellite reception equipment.



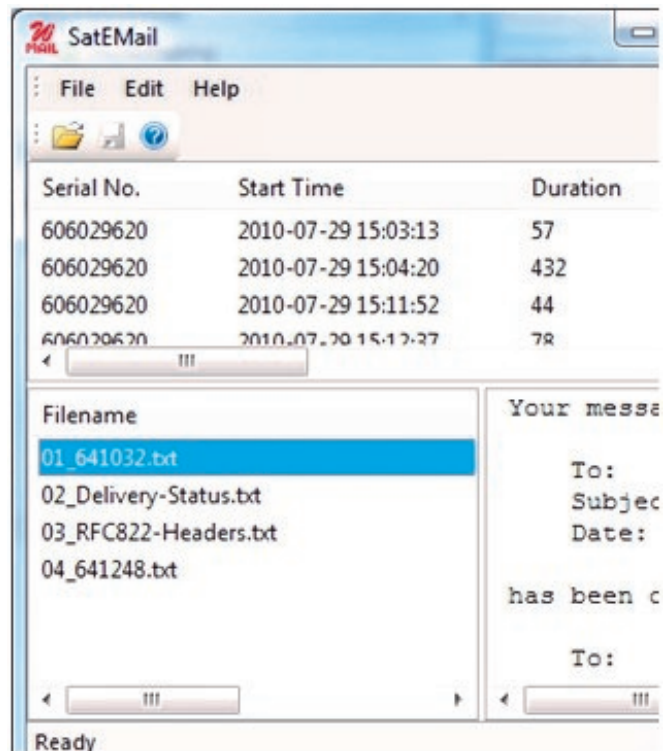
W-SAT-email-Decoder Overview

The W-Sat-email-Decoder takes as its input a session file and the corresponding text files, as produced by a Wavecom decoders, or any text file from an external source containing emails.

After protocol decoding and possible decompression, the email(s) and possible attachment(s) are output as files.

The decoding process is fully automatic, and so excellent decoding results can be achieved with almost no user interaction – all the user has to do is to load the data files. With the user-friendly GUI (see screenshot above), data files may be loaded individually or by directory into the decoder, after which the decoding process starts.

Once decoding has completed, the user can read email contents and browse any attachments. Status messages offer an easy-to-interpret indication of the success of the decoding.



Email text and attachments (pictures, PDF files, spreadsheets, etc.) can be extracted from the data streams and saved.

Metadata for each data stream, such as MES ID and mode, is provided by a session list file automatically generated by the Wavecom INMARSAT or other Satellite decoders. The file may also be manually edited by the user according to his particular requirements.

W-SAT-email-Decoder

Satellite e-mail Extractor

W-SAT-email-Decoder Application

◆ AMOS	(Mails and attachments)
◆ Dualog	
◆ GlobeWireless	(Mails and attachments)
◆ GTMail	
◆ MS-RAS PPP	
◆ Rydex	(Mails and attachments)

◆ se@COMM	(Iridium)
◆ SkyFile	(Mails and attachments)
◆ UUCP	
◆ UUPlus	(Iridium)
◆ Xdatos	(Iridium)
◆ ZModem	

MS-RAS PPP Explanation

PPP (Point-to-Point Protocol) is not an email application, but a transport protocol for upper layer protocols including TCP/IP and various email application protocols. The Wavecom Satellite Email De-

coder decodes PPP sessions and converts them into PCAP-formatted files. This allows PPP sessions to be further examined using WireShark – an open source protocol analysis application.

What do I need ?

To produce the data files to be decoded, two system components are necessary: An adequate satellite receiver system, and a decoder to produce the data stream from the received signal (see the application notes).

Wavecom recommends its W-PCle, W-PCI and W-CODE decoders. However the Wavecom Satellite

Email Decoder is compatible with other decoders able to store decoded data in a supported file format. For details on supported file formats, please refer to the appropriate Wavecom decoder manual.

W-SAT-email-Decoder DLL

For advanced users who wish to integrate the satellite email decoding library into their own software environment, Wavecom offers a DLL interface

upon request. The DLL allows the developer to access the decoders from his own application.

W-SAT-email-Decoder

Satellite e-mail Extractor



Since thirty years Wavecom Elektronik AG has developed, manufactured and distributed high quality devices and software for the decoding and retrieval of information from wireless data communication in all frequency bands. The nature of the data

communication may be arbitrary, but commonly contains text, images and voice. The company is internationally established within this industry and maintains a longstanding, world-wide network of distributors and business partners.

Product Information

Products	http://www.wavecom.ch/product-summary.php
Datasheets	http://www.wavecom.ch/brochures.php
Specifications	http://www.wavecom.ch/product-specifications.php
Documentation	http://www.wavecom.ch/manuals.php
Online help	http://www.wavecom.ch/content/ext/decoder-online-help/default.htm
Software warranty	One year free releases and bug fixes, update by DVD
Hardware warranty	Two years hardware warranty
Prices	http://www.wavecom.ch/contact-us.php

System Requirements

	<i>Minimum</i>	<i>Recommended</i>
CPU	P4 Dual-Core 2.4 GHz	Core i5 or Core i7 2.8 GHz
Memory	2 GB RAM	4 - 8 GB RAM
OS	Windows XP	Windows 7 32-bit or Windows 7 64-bit

Distributors and Regional Contacts

You will find a list of distributors and regional contacts at <http://www.wavecom.ch/distributors.php>



WAVECOM ELEKTRONIK AG, Hammerstrasse 8
8180 Buelach, Switzerland
Phone +41 44 872 70 60 Fax +41 44 872 70 66
E-Mail: sales@wavecom.ch
Internet: www.wavecom.ch