

# UX 30

UX Range: 2 GHz - 6 GHz / 30 W CW



## Prana UX 30

- Class A solid state
- Broadband (instantaneous single band): 2 GHz – 6 GHz
- Typical output power : 30 W CW
- Linear output power (1 dB compression) guaranteed with harmonics <-20 dBc:
  - P1dB > 20 W and H < -20 dBc up to 4 GHz and
  - P1dB > 17 W and H < -20 dBc from 4 GHz to 6 GHz
- Air cooling: self contained fans
- Can operate in full mismatch conditions without damage
- Upgradable to UX 55 possible
- Reliable, efficient and robust
- 19" Rack
- 3 years standard warranty

## Maintenance

- Amplifier designed for minimal maintenance
  - Easy access to all parts
  - Modular design
  - Repairs with minimum adjustments
- Rapid diagnostic
- Minimal downtime
- Contract for preventive and corrective maintenance available

## Applications

- EMC tests
- RF tests and instrumentation
- Radiocommunication
- Measurement and research laboratories

## Versions

- UX 30 S : standard amplifier
- UX 30 D amplifier with:
  - Display
  - Digital control
  - IEEE 488 GPIB Communication
- UX 30 SC : UX 30 S with
  - Integrated bidirectional coupler
- UX 30 DC : UX 30 D with :
  - Integrated bidirectional coupler
  - display of instantaneous power

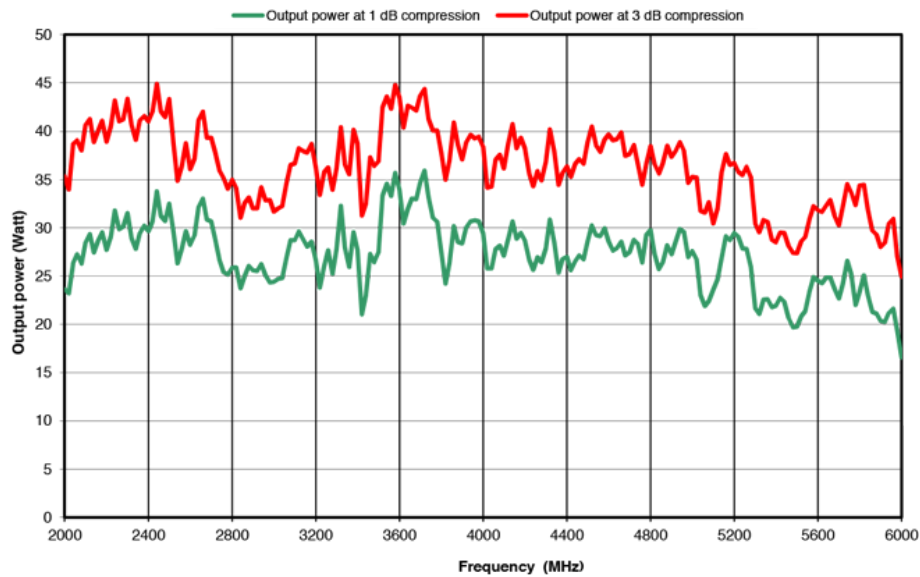
## UX Range

- UX 15 => 15 W CW
- UX 30 => 30 W CW
- UX 55 => 55 W CW
- UX 100 => 100 W CW
- UX 150 => 150 W CW

## Extra

- External coupler
- Supply and integration inside a cabinet
- RF Power cable
- Switching unit

UX30 POWER AMPLIFIER 30W / 2 GHz - 6 GHz



### Specifications

Frequency bandwidth	2 GHz - 6 GHz
Typical output power	30 W
Power at 3 dB compression	30 W min. up to 4 GHz / 25 W min. from 4 GHz to 6 GHz *
Power at 1 dB compression	20 W min. up to 4 GHz / 17 W min. from 4 GHz to 6 GHz *
Harmonics distortion	H2,H3 < -20 dBc for the output power at 1 dB compression limit
Class type	Class A
Gain	49 dB
Linear power gain flatness	± 5 dB max
Mismatch tolerance	infinite without damage
Input impedance	50 ohms / VSWR: 2:1max
Output impedance	50 ohms / VSWR: 2:1max
Input power	+10 dBm max.
RF input connector	Type N fem. (front or rear panel) – other connector type on request
RF output connector	Type N fem. (front or rear panel) – other connector type on request
Ambient operating temperature	0 °C / + 35 °C
Room temperature storage	-20 °C / +70 °C
Cooling	Forced air: 60 l/sec max. (self contained fans)
Power voltage	90-250 VAC, 47-63 Hz, single phase
Rated current	3.2 A at 110 VAC / 1.6 A at 230 VAC
Dimensions	640 x 450 x 178 mm (4U) / 25.2 x 17.7 x 7 in (4U)
Weight	20 kg / 44 lb

### UX 30 D version :

Safety interlock	Connector type BNC
Digital control	Transistors, power supplies and internal temperature
Communication interface	IEEE 488
4 lines digital display	Status, faults, (direct and reverse instantaneous power for DC version)

### UX 30 SC and UX 30 DC versions :

Integrated bidirectional power coupler	Coupling factor 40 dB typ. (SC version) / 49 dB typ. (DC version)
Power coupling connector	Type N fem. (front or rear panel)
Estimated output power losses due to the coupler	0.5 dB * => take account these power losses for the min output power